

## REGIONAL SCHOOL DISTRICT #10

Regional School District No. 10 is comprised of the towns of Burlington and Harwinton. They are lovely rural, suburban towns located in the Litchfield Hills and the Farmington Valley in northwestern Connecticut with a combined population of about 13,600. Burlington was named "the fastest growing town in Connecticut" in a recent Hartford newspaper article and rated number one in small towns in Hartford County by Hartford Magazine. In an issue of Connecticut Magazine, Harwinton was listed as the third most desirable Connecticut town with a population under 10,000. The communities' dedication to children and the desire to provide quality educational programs make this an excellent place to live and work.

The towns are located within close proximity to the educational, cultural and business opportunities afforded by the cities of Hartford, Waterbury and Torrington. In addition, extensive park and recreational facilities are located in the towns of Burlington and Harwinton.

## LEWIS S. MILLS MISSION STATEMENT

The mission of Lewis S. Mills High School is to foster academic excellence, personal growth, and respect for diversity. Within a safe learning environment, we share the collective responsibility with students, parents, and the community to cultivate the skills, knowledge and attitudes that help our students to realize their full potential as learners and responsible citizens, and to experience success beyond high school.

## MUSIC AT LEWIS S. MILLS HIGH SCHOOL

Lewis S. Mills High School offers a variety of music courses and activities for the students in grades 9 through 12. Our performing ensembles perform at many concerts, festivals, and local community events. In addition, some or all of these ensembles travel extensively to different locations throughout the United States and abroad on a regular basis for the purpose of participating in festivals/competitions and small performing tours. Over the past several years, participation in the music program as more than quadrupled, and currently nearly twenty-five percent of the entire student population participates in one or more of the performing ensembles at Lewis Mills.

## REGION #10

### MUSIC DEPARTMENT PHILOSOPHY

Music has been and continues to be an integral part of world culture, and is essential to a complete education for all students. It is unique to humankind that individuals are enriched through the ability to develop and appreciate the arts, and through music we gain an understanding of our society and the societies of others.

Every individual has musical aptitude, and it is important to the growth of each person to explore that potential. The processes of creating, performing and responding to music enhance the development of higher order thinking skills as they relate to self-discipline, organization and responsibility. In addition, students acquire interpersonal skills and learn the importance of cooperative achievement. These tools assist in living and working in a diverse society.

## New England Music Festival

Lewis S. Mills High School - Burlington, CT 06013

### STUDENT AGREEMENT

By applying for acceptance in the New England Music Festival, you agreed to follow the rules and regulations of personal conduct. Please remember that the hosts of this music festival are not only responsible for your safety and well-being, but also for upholding supporters who have an interest in your participation.

### NEMFA FESTIVAL RULES

- The possession and/or use of alcoholic beverages or illegal drugs is forbidden and will result in immediate dismissal from the Festival.
- Absolutely NO SMOKING during the Festival.
- Attendance at all Festival activities is mandatory unless you are ill. It is the student's personal responsibility to be aware of the daily schedule.
- Please report to all rehearsals on time, be polite, respectful and cooperative.
- Your name badge is your festival identification. Please wear it at all times. See your Ensemble Manager if it is lost.
- Students are not allowed to drive during the Festival. Host parents, parents or Directors/Supervisors must transport students to and from all Festival events.
- Curfews will be set for each evening, and they will be strictly enforced.
- Make sure that your valuables are secured in the designated locations.
- Abuse, defacement, or theft of any property or facility is prohibited.
- Students are expected to cooperate with the conductors, festival chair persons, host families and festival staff at all times.

**If you have a problem or question,  
see your Ensemble Manager first.**

### IMPORTANT PHONE NUMBERS

**John A. Deeb**  
*LSM Coordinator of Fine Arts*  
LSM: 860-673-0423 (15419)  
Cell: 860-614-5175

**David Miller**  
*LSM Classroom/Vocal Music*  
LSM: 860-673-0423 (15179)  
Cell: 860-302-5200

**Lewis S. Mills Main Office**  
860-673-0423

**Headquarters Hotel  
Marriott Hartford Farmington**  
15 Farm Springs Road  
Farmington, CT 06032  
Phone: 1-860-678-1000  
Fax: 1-860-677-884

## NEW ENGLAND MUSIC FESTIVAL

Connecticut, Maine, Massachusetts, New Hampshire, Rhode Island, Vermont

## 91st Annual CONCERT FEASTIVAL

March 15-17, 2018

## FESTIVAL HOST

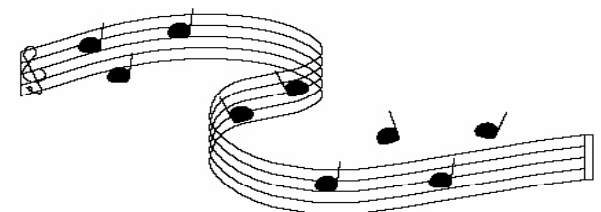
Lewis S. Mills High School  
26 Lyon Road  
Burlington, CT 06013



# STUDENT HANDBOOK

On behalf of Lewis S. Mills High School, Regional School District #10 and the New England Music Festival Association Inc. we would like to welcome you to the 91st New England Music Festival. It is our sincere hope that you will find your stay here a pleasant as well as musical and culturally rewarding experience. Please feel free to speak to us should you need anything that will help make your stay more pleasurable. If you have any questions or concerns the entire Festival Staff is eager to help in any way possible.

Musically Yours,  
John A. Deeb, David Miller  
Lewis S. Mills High School  
NEMFA 2018 Site Hosts



## REGULATIONS/PROCEDURES/POLICIES

**HOUSING** - Housing is organized with host families by the Festival Committee. Questions regarding rooming assignments should be directed to the Host Chairpersons first at school, or later at the headquarters hotel. The Marriott Hartford Farmington, Farmington, CT

**REGISTRATION/ORIENTATION** - Upon arrival at the Festival, your chaperone will check in at the Registration Table to receive your rooming assignment and other information. After registration you will attend a general orientation meeting.

**MOTOR VEHICLES** - You may not rent, borrow, or drive a motor vehicle of any sort while participating in the festival. You may NOT be a passenger in any motor vehicle, except that of your chaperone, their designated driver, or your host family.

**MEDICAL INFORMATION** - You must fill out the appropriate medical form. Please bring with you any medicine that you need to take regularly, and give the information about the medicine to the Host Chairpersons or designee. A medical person is in attendance at all rehearsals and performances, and a physician is on call at all times. Should you require emergency medical attention, the Host Chairpersons will make the necessary arrangements for you.

**PHOTOGRAPHS/RECORDINGS** - Rehearsals and performances may be photographed, reproduced, and/or recorded on film, compact disc, or other media and may be displayed and/or disseminated for educational and archival purposes directly related to the New England Music Festival Association Inc.

## REHEARSAL/CONCERT SCHEDULE MARCH 15-17, 2018

### THURSDAY, MARCH 15, 2018

#### ALL

10:00-1:30 p.m.	Registration & Luggage Drop Off	Auditorium Lobby/Gym
10:00 a.m.-1:00 p.m.	Vocal Placement Auditions	LSM Mus Tech, Yoga Room, Back Gym
1:30-2:15 p.m.	General Meeting	Auditorium
2:30 p.m.	Students report to rehearsal rooms	

#### BAND

2:30 p.m.	Rehearsal	HB Band Room
5:00 p.m.	Dinner	LSM Cafeteria
5:30 p.m.	Rehearsal	HB Band Room
9:00 p.m.	Meet Host Families	LSM Gym

### THURSDAY, MARCH 15, 2018 cont'd

#### ORCHESTRA

2:30 p.m.	Rehearsal	LSM Band Room
5:00 p.m.	Dinner	LSM Cafeteria
5:30 p.m.	Rehearsal	LSM Band Room
9:00 p.m.	Meet Host Families	LSM Gym

#### CHORUS

2:30 p.m.	Rehearsal	Auditorium
5:45 p.m.	Dinner	LSM Cafeteria
6:15 p.m.	Rehearsal	Auditorium
9:00 p.m.	Meet Host Families	LSM Gym

#### DIRECTORS

All Day	Director's Hospitality	LSM Chorus Room
6:00 p.m.	Vocal Solo & Ensemble Performance Acceptance Review	HB Chorus Room
6:45 p.m.	Open Discussion "Adding Instrumental Ensembles to Solo & Ensemble Festival"	HB Chorus Room
7:45 p.m.	Open Discussion "A New England Jazz Ensemble"	HB Chorus Room

### FRIDAY, MARCH 16, 2018

#### BAND

8:30 a.m.	Rehearsal	HB Band Room
12:45 p.m.	Lunch	LSM Cafeteria
1:15 p.m.	Rehearsal	HB Band Room
5:00 p.m.	Meet Host Families/Overnight	

#### ORCHESTRA

8:30 a.m.	Rehearsal	LSM Band Room
12:45 p.m.	Lunch	LSM Cafeteria
1:15 p.m.	Rehearsal	LSM Band Room
5:00 p.m.	Meet Host Families/Overnight	

#### CHORUS

8:30 a.m.	Rehearsal	Auditorium
12:15 a.m.	Lunch	LSM Cafeteria
12:45 p.m.	Rehearsal	Auditorium
5:00 p.m.	Meet Host Families/Overnight	

#### SOLO & ENSEMBLE

5:00 p.m.	Dress Rehearsal	Auditorium
-----------	-----------------	------------

#### DIRECTORS

All Day	Director's Hospitality	LSM Chorus Room
2:30 p.m.	Director's Meeting	HB Chorus Room
6:00-8:00 p.m.	Director's Reception	Farmington Marriott

#### NEMFA EXECUTIVE BOARD

9:15 a.m.	Past President's Meet	HB Chorus Room
10:15 a.m.	Executive Bd Meet	HB Chorus Room

### SATURDAY, MARCH 17, 2018

#### BAND

9:00 a.m.	Drop off luggage	LSM Gym
9:30 a.m.	Dress Rehearsal	Auditorium
11:00 a.m.	Rehearsal	HB Band Room
1:00 p.m.	Lunch	LSM Cafeteria
1:30 p.m.	Rehearsal	HB Band Room
3:00 p.m.	Change for Concert	LSM Locker Rooms
3:30 p.m.	Band Warm-up	HB Band Room
4:00 p.m.	CONCERT	Auditorium
	(band held in HB bandroom)	
After Performance	Collect Luggage/Meet Parents	

#### ORCHESTRA

9:00 a.m.	Drop off luggage	LSM Gym
9:30 a.m.	Rehearsal	LSM Band Room
11:30 a.m.	Dress Rehearsal	Auditorium
1:00 p.m.	Lunch	LSM Cafeteria
1:30 p.m.	Rehearsal	LSM Band Room
3:00 p.m.	Change for Concert	LSM Locker Rooms
3:30 p.m.	Orchestra Warm-up	LSM Band Room
4:00 p.m.	CONCERT	Auditorium
	(to LSM band room at finish)	
After Performance	Collect Luggage/Meet Parents	

#### CHORUS

9:00 a.m.	Drop off luggage	LSM Gym
9:30 a.m.	Rehearsal	LSM Gym
12:30 p.m.	Lunch	LSM Cafeteria
1:00 p.m.	Change for Concert	LSM Locker Rooms
1:30 p.m.	Chorus Warm-up	LSM Gym
2:00 p.m.	CONCERT	Auditorium
After Performance	Collect Luggage/Meet Parents	

LSM - Lewis S. Mills High School  
HB - Har-Bur Middle School

